



TOTAL PROJECT COST 83,214

# Project Overview

---

This meticulously cared for mid-century kitchen was in need of a style and functional update. The homeowners came to us thinking that a home addition was the only way to achieve the space they wanted in their kitchen and dining room.

We discussed the option of an addition and conversely, what could be achieved by simply taking out the kitchen wall. In the end, the price tag and the rendered 3D drawings gave the homeowners the answers they needed. They decided to remodel the existing space.

Specialty cabinet inserts, Cambria quartz countertops, space saving appliances, and a custom hood vent for the range are just some of the products that created a the spacious, light feel for this eat-in kitchen.

The main problem solved was that the kitchen and dining room both had a closed in feeling. By removing the wall and taking out top cabinetry in that area of the kitchen we changed the feel of the entire main level of this ranch home.

The homeowners were thrilled with the final look and feel of their eat-in kitchen. The space has become one that they have enjoyed family time and entertaining guests. They are so excited to have people over now!

LIGHT WHITE KITCHEN EXPANDED | RESIDENTIAL KITCHEN \$60,001-100,000

LIGHT WHITE KITCHEN EXPANDED



*Light White Kitchen Expanded*

RESIDENTIAL KITCHEN \$60,001-100,000



# Mission

---

This meticulously cared for mid-century kitchen was in need of a style and functional update.

The homeowners came to us thinking that a home addition was the only way to achieve the space they wanted in their kitchen and dining room.

We discussed the option of an addition and conversely, what could be achieved by simply taking out the kitchen wall.

In the end, the price tag and the rendered 3D drawings gave the homeowners the answers they needed. They decided to remodel the existing space.

## MAIN PROBLEM AREA



## BEFORE

---

This wall dividing the kitchen and dining room created two rooms that felt small and closed off.



## AFTER

---

Removing the wall and creating an eat in kitchen with a peninsula created an open concept that changed the entire feel of the home.

## MAIN PROBLEM AREA



## BEFORE

---

Removing the wall created the need for layout changes from relocating the refrigerator to doing away with upper cabinets.



## AFTER

---

The open feeling was worth the sacrifice of cabinetry space.

However, with some creativity, we gave the homeowners ample cabinet space for their needs.



## OUR IDEAS



The rendered plans were an important part of the homeowner's decision to go with an existing space remodel over a home addition remodel.

Giving the client the space they desire without going over their budget was very important to us. We felt like this was a win for us and a win for the client.

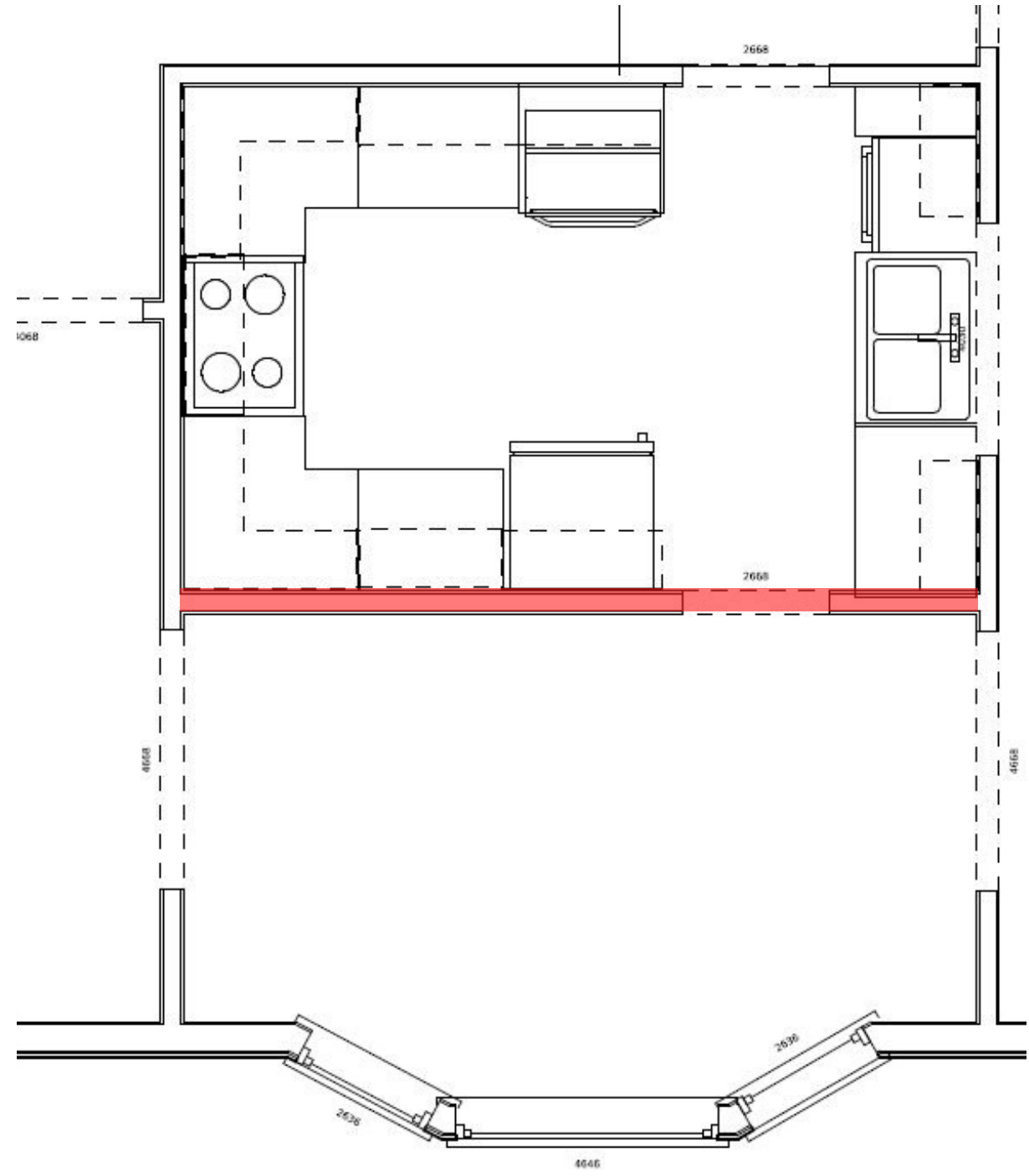
# Plans

The layout changes beyond removing the wall were subtle, but we made several other changes to create a smoother feel to the final kitchen space.

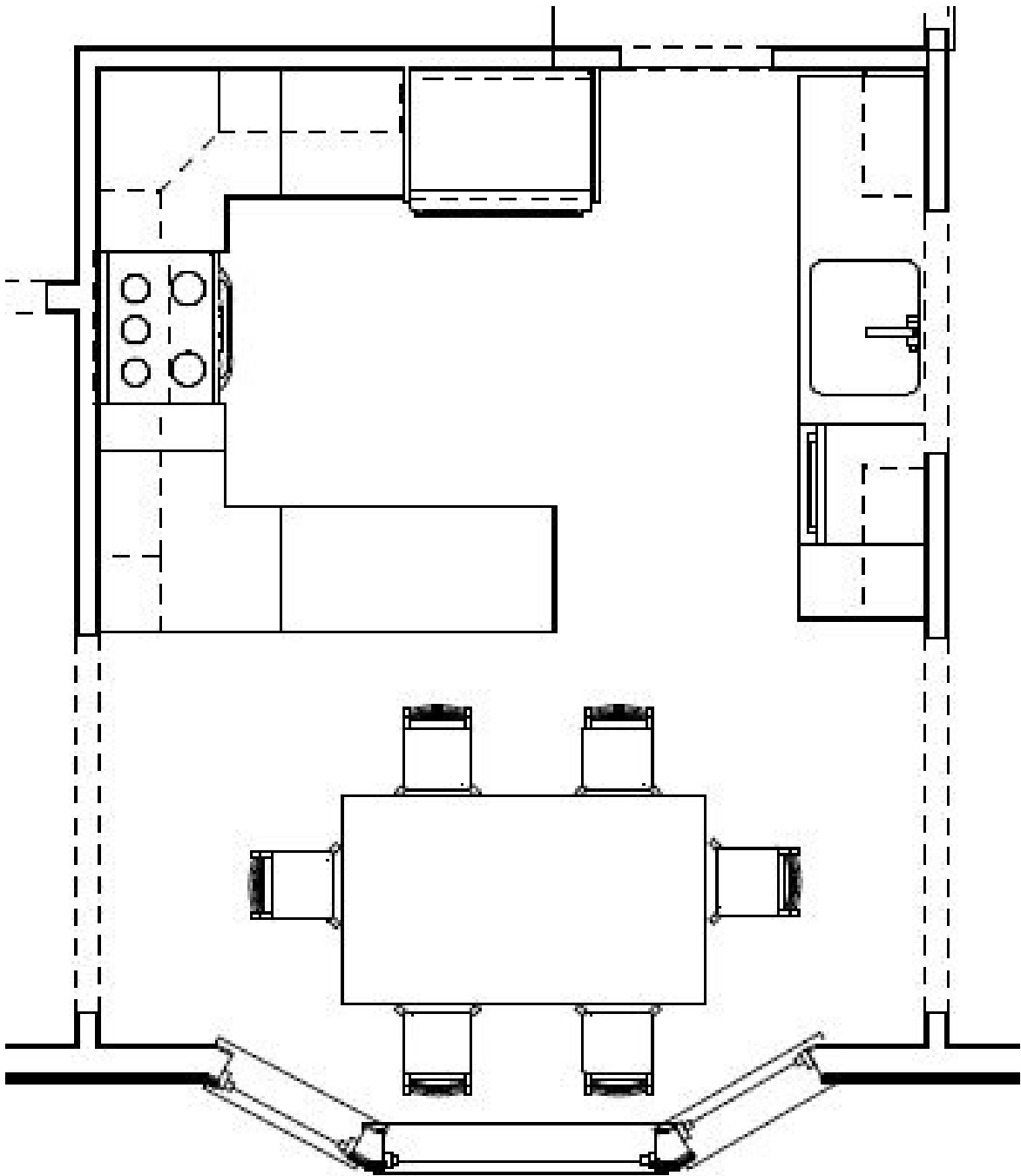
We gave the dining room larger openings into the formal living room and family room.

The kitchen cabinet layout took up a slightly larger footprint to allow some different cabinet options. We also moved around some appliances to allow for a peninsula.

BEFORE



PROPOSED



BEFORE



01

Sink  
Wall



02

Range  
Hood  
Wall



03

Back  
Wall





01

*Sink Wall*



# 01

The sink wall was the most functional area of the former kitchen design. Keeping the main layout, we made only small changes in the cabinet layout.

One of those changes was moving the dishwasher to the opposite side of the sink. The peninsula was designed to give slightly more space for a walkway and to allow the dishwasher to open without blocking the traffic.



# 01

---

The homeowners kept this feature of a cased opening to the family room. We retrimmed the opening and added a Cambria sill.



## FAUCET AND AIR SWITCH

A faucet with a pull down feature and an air switch for the garbage disposal are selections we include in every kitchen remodel.

Ease of use is essential to our kitchen design.

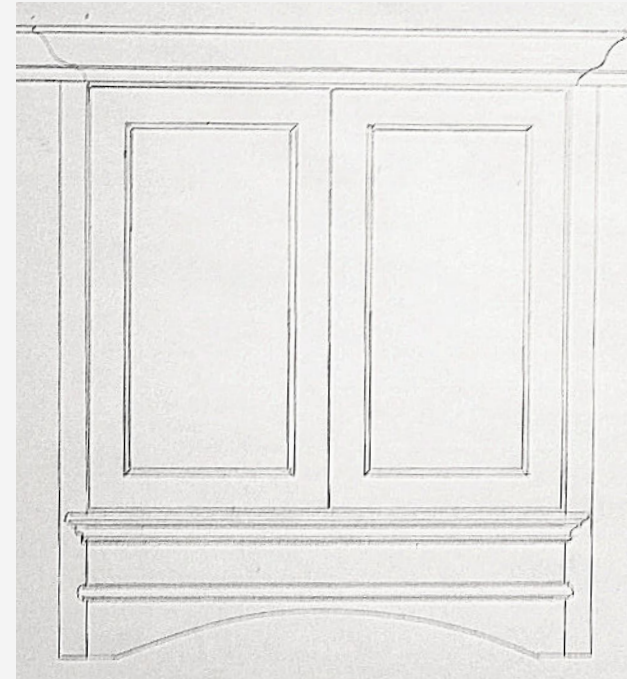


02

*Range Hood Wall*



## DESIGN DRAWING



02



A functioning range hood was important to these homeowners, along with additional cabinet space. We designed a cabinet modification that was lovely and functional.

Replacing the cooktop with a range oven also became an important design element to open up space for the refrigerator on the wall where the built in oven used to be.

# 02

---

A built in microwave was important to the homeowner after living with one taking up precious countertop space.



## CABINET DESIGN

We removed the soffits from over the cabinets and installed taller cabinets to reclaim some lost space.

Additionally, we spaced out the cabinets to allow for an angled upper corner cabinet and a spice rack cabinet next to the oven, in addition to keeping the two lazy susan base cabinets.

Drawers in place of several door cabinets also made storage more accessible. And a trash pull out was also an important part of our design.

And finally, the over the refrigerator cabinet housed vertical storage for cookie sheets and pans.



03

*Back Wall*



# 03

---

A counter depth refrigerator was important to the design and kept the kitchen layout feeling spacious.





# 03

---

With the soffits removed and cabinet inserts, the cabinet over the refrigerator took on a lot of baking supplies and created a lot of useable space.

## TILE DESIGN

The offset subway tile design gives visual interest, while the stark white tile continues the clean and fresh look from the cabinets and countertops.

# PENINSULA



## WAINSCOTING

---

Wainscoting on the back side of the peninsula cabinetry gives this kitchen the polished look we hoped for.



## CABINET DESIGN

---

Large drawers were also on the homeowner's wish list--to easily house pots and pans near the range.

A trash pull out is conveniently located at the end of the peninsula and right in the center of the kitchen.

## DETAILS

Careful attention to  
details including:

beautifully installed  
subway tile

custom design and  
modified vent hood  
cabinet detail

and beautiful satin  
brass hardware

give this kitchen  
the class that  
created an entirely  
new feel for this  
home.



# GE CAFE SERIES APPLIANCES



**Series Stainless Interior Built-In Dishwasher 45 dBA with Hidden Controls**

Model: CDT836P2MS1  
SKU: 52949997



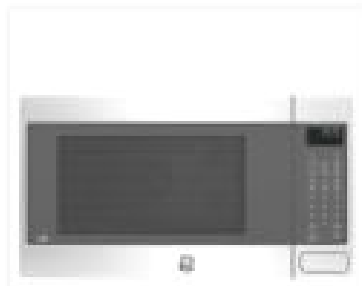
**30" Dual-Fuel Range with Warming Drawer in Stainless Steel**

Model: C2S986SELSS  
SKU: 49934003



**22.1 Cu. Ft. Counter-Depth French-Door Refrigerator**

Model: CYE22TSHSS  
SKU: 41215419



**1.5 Cu. Ft. Countertop Microwave with Convection in Stainless Steel**

Model: CEB1599SJSS  
SKU: 46551719

Sausalito 5-Light Deep Bronze Pendant Troy Lighting



Cambria Quartz-Ironsbridge Solid Surface Countertop



Flynn Small Recycled Glass Pendant Pottery Barn



Seaport Arctic 2x10 Polished Ceramic Tile- Tilebar



# Products and Materials

Moen Brantford Pull Down Faucet in Chrome



Disposer Air Switch Chrome



Emtek Geometric Oval Knob Satin Brass

Emtek Blythe Pull Satin Brass



Hallmark Hardwoods Monterey Collection Gaucho Hickory



"The whole experience was a good one! Each and every one of the staff went above and beyond to be friendly, helpful, organized and to provide quality work."

*light white kitchen expanded*

